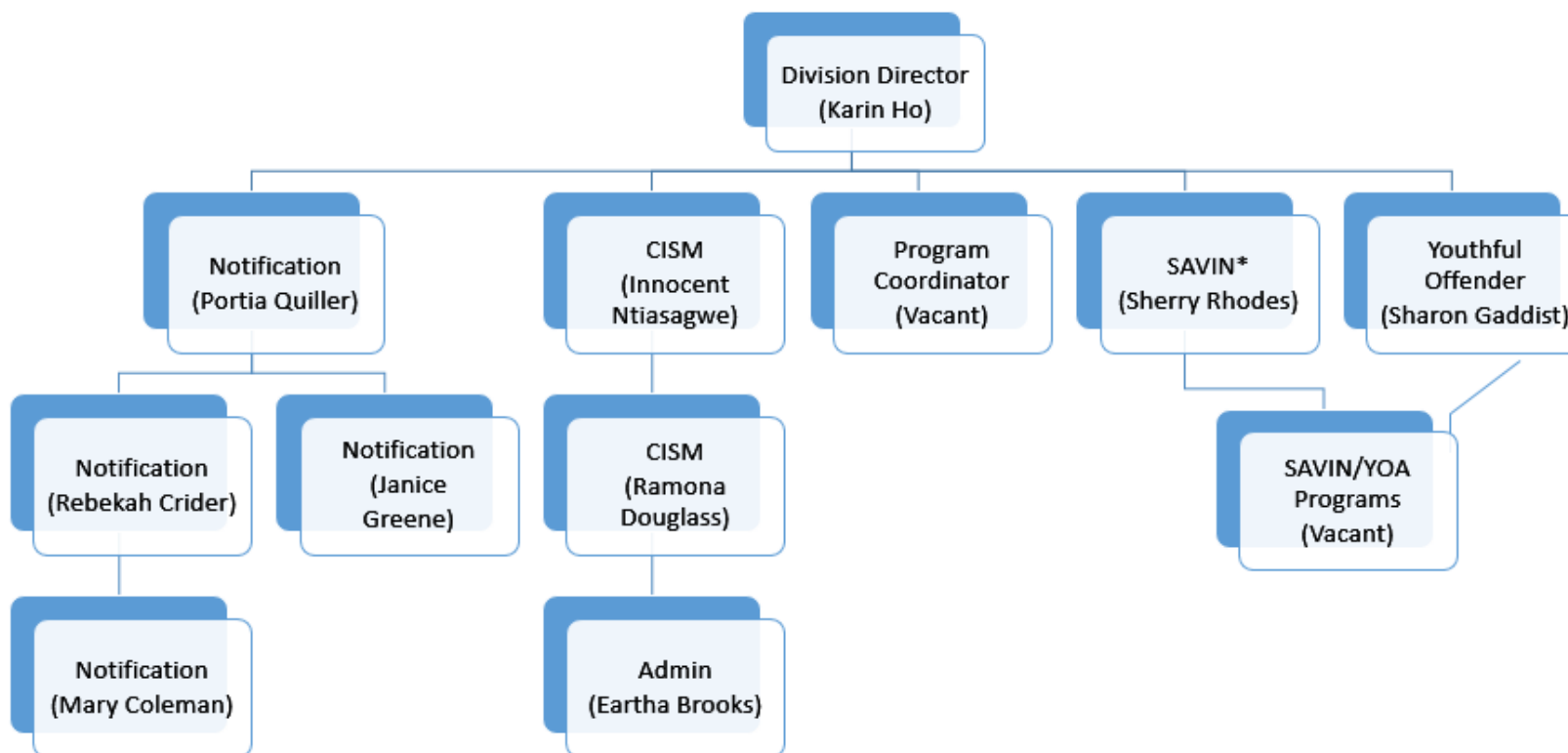


Programs, Reentry, and Rehabilitative Services Organization Chart - Victim Services Division⁶

Victim Services Division reports to the Deputy Director of Programs, Reentry, and Rehabilitative Services



*SAVIN – Statewide Automated Victim Information and Notification

CISM – Critical Incident Tress Management

⁶ S.C. House of Representatives, House Legislative Oversight Committee, “Agency Presentation – Programs, Reentry, and Rehabilitative Services Unit (June 18, 2019),” under “Committee Postings and Reports,” under “House Legislative Oversight Committee,” under “Corrections, Department of,” and under “Meetings,”

[https://scstatehouse.gov/CommitteeInfo/HouseLegislativeOversightCommittee/AgencyWebpages/Corrections/SCDC%20Presentation%20-%20PRRS%20Division%20UPDATED%20\(7.25.19\).pdf](https://scstatehouse.gov/CommitteeInfo/HouseLegislativeOversightCommittee/AgencyWebpages/Corrections/SCDC%20Presentation%20-%20PRRS%20Division%20UPDATED%20(7.25.19).pdf) (accessed October 9, 2019), slide 18. Hereinafter “PRRS Presentation.”